

FUSION LIVE

SOUND | VISION | LIGHTING



TURBOSOUND New FlexArray
Owners

BEYERDYNAMIC Comms
headsets

TURBOSOUND FIR Filters and
New Prediction Software

DTS Delta 10 Colour
Changer

VIVITEK HD Projection

**BEYERDYNAMIC AND
WILLIAMS SOUND**
Conference audio solutions

Fusion LIVE is a newsletter for live sound and lighting operators, system owners, venue techs, AV staging companies and anyone involved in, or with an interest in, the production and rental markets. To receive future issues of Fusion LIVE direct to your post box, please email your name and postal details to marketing@hillssvl.com.au with "Fusion LIVE" as the subject line.

Hillsong - Powered by Lab.gruppen PLM's



Hillsong Church have selected Lab.gruppen PLM Series Power Amplifiers for its flagship Baulkham Hills campus in Sydney, Australia. The PLM's power the church's new speaker system and make full use of the Lab's integrated Lake processing and monitoring features.

Steve LeRoux and Jad Gilles head the Hillsong audio team and are delighted to be using PLM's. Steve commented: "We purchased our first Lab.gruppen amplifiers a few years ago and they have been rock-solid. We've also been using Lake processors for many years, so the combination of Lake processing built into a Lab amp made choosing the PLM's an easy decision."

A total of twenty-four PLM's were supplied comprising of 20 x PLM10000Q (4 x 2300w) and 4 x PLM20000Q (4 x 5000w). Two FP10000Q's (4 x 2100w) were also purchased and power the stage monitor speakers.

The Lab.gruppen PLM's feature AES and analogue inputs as well as Dante (audio over a network). The PLM's at Hillsong are used with a Lake processor as a front end system controller. The Lake receives AES audio from the mixing console and converts it to Dante, which is distributed to the PLM racks over fibre. The PLM's are set with

Dante as the priority input, followed by AES as the secondary, and analogue audio as the third level of input redundancy. Should Dante and AES fail, analogue audio will seamlessly take over.

In terms of performance, Steve added: "We know that the Lab's sound good and this was proven when we replaced the stage monitor amplifiers with the FP10000Q's. We just did a straight amplifier swap yet every musician and presenter could instantly hear the improvement and thought they were hearing a new monitor system. And it's the same with the FOH system – you simply can't beat the performance of Lab's".

Supplied and installed by Brad Law and his team from Cuepoint, four racks of PLM's are located on the catwalk with full control and monitoring available via a laptop anywhere in the venue.

Continued next page...

LAB.GRUPPEN

Hillsong - Continued...

Cuepoint engaged Ricki Cook to create and configure the large Lake/PLM file. Brad commented: "The Lake/PLM software makes controlling this complex system quite simple. Of particular note is the grouping feature that allows us to have all key information on the one screen. Having extensive DSP available in every amplifier enabled us to easily cater for the different modes of operation in the church.

On a project such as this you want to know that the signal distribution and amplification network are both solid and sonically true. This project has gone very smoothly and the results are indeed what we all had hoped for. We look forward to using PLM's again on future projects."

LAB.GRUPPEN



Brad Law, Ricki Cook and Steve LeRoux with one of the PLM Racks.

Beyerdynamic Comms Headsets

Quality comms are critical for any event and Beyerdynamic are famous for their durable and comfortable range of Comms headsets. The long serving DT108 and DT109 are still the standard for many companies, but Beyer do have other models worth considering when next in the market for headsets.

THE STANDARD



The **DT108** (single) and **DT109** (dual) set the standard for durability and performance in comms headsets. An old favourite but still popular.

LIGHT AND COMFY



The **DT280** (single) and **DT290** (dual) are low-profile, light, very comfortable and sound spectacular - and designed for the rigours of the road.

FOR HIGH NOISE EVENTS



The new **DT790** headset combines the DT770M live headphones with a DT290 mic to create a high spec, comfortable headset with ambient noise headphone attenuation of 35dB.

DTS Delta 10 Colour Changer

The City of Sydney Council recently evaluated the DTS Delta 10 for their Earth Sky Public art project at Glebe Park.



Originally specified were 575 Watt metal halide fixtures but with the recent development in LED technology, Hills SVL were able to prove the merit of the Delta 10 F from DTS. The lights were tested on two large Moreton Bay Fig trees and the light output was astounding.

The project designers, specifying electrical engineer and council project managers were so impressed that nine DTS Delta 10 F units have now been purchased.

The project concept and unique DMX control system has been designed by Allan Giddy, Director, ERIA (The Environmental Research Initiative for Art), COFA, UNSW.

Allan's control system monitors the dusk and sunset colours and automatically programs the opposite colour of the spectrum for the DTS Delta 10 F, resulting in magnificent colour combinations of environment and subject.

There are two models of Delta 10:

The **DELTA 10 F RGBW** is a new colour changer with LED technology and a high protection rating (IP65), ideal for use both indoors and outdoors. It's the brightest LED colour changer in its category: 7,000 Lux at 5m. Its light source is composed of 240 LEDs (60 Red, 60 Green, 60 Blue, 60 White) with 19,500 total Lumens.

DELTA 10 WASH ZOOM LED colour changer features 5,000 Lux at 5m (15°), and 240 x LEDs (60 Red, 60 Green, 60 Blue, 60 White) with 19,500 total Lumens.

Robust and resilient, DELTA 10 R ZOOM is designed for the road and ideal for rental applications that demand intense and nearly continuous usage.



Full HD projection for a WXGA price - From Vivitek



So your client requests full HD projection for their next event. Problem is, they stumble on the price. Commercially speaking (ie. not Home Theatre) there isn't much choice for full HD.

Enter the Vivitek D952HD projector. With 3600 Lumens of full HD 1080p projection grunt, dual HDMI inputs for the flexibility of multiple sources and the reliability of a Texas Instruments DLP projection engine, the Vivitek D952HD is the perfect choice for any AV company.

Please call to arrange a demo.



Features:

- 3600 Lumens with a 3000:1 contrast ratio
- DLP® and BrilliantColor™ technologies from Texas Instruments
- Connectivity options include: two (2) HDMI v1.3, VGA-in, composite, component, S-video
- Network-ready via RJ45
- VividWheel III for improved color reproduction and automatic gain control
- Top-loading, sliding cover for quick and easy lamp replacement
- Keypad lock prevents accidental system adjustments
- Black case

New FlexArray Tools – FIR Filters and EASE Focus 2

Turbosound have announced the release of dedicated FIR filters for FlexArray, for use with Lake processing and Lab.gruppen PLM amplifiers.

A powerful new prediction software package is also now available.

FIR (Finite Impulse Response) filters are designed to derive the best performance from Turbosound's FlexArray and soon to be released FlashLine concert touring loudspeaker systems. This project was especially gratifying for Turbosound engineers as it was a direct result of discussions they were having with Peter Morris of Adelaide Sound Hire who convinced them of the improvement possibilities and went on to co-develop the presets.

"We're all very impressed with the performance improvement on what is already a widely acknowledged 'smooth' sounding system. The re-engineered DSP parameters use the Lake and Lab.gruppen linear phase filters, these filters by default improve the loudspeaker's impulse response through the mid/high section" says Turbosound's senior design engineer Dan Orton. "Previously such crossover points/filters could not have been used and would have caused significant issues in the horizontal and vertical dispersion characteristics. The FIR's however allow us to further improve on the already impressive performance of the system without compromise."

A new version of the popular EASE Focus acoustic simulation software has been launched, with full support for Turbosound's recently released GLL system definition files. Developed by AFMG (Ahnert Feistel Media Group) – the creators of EASE,

And the WINNER is...

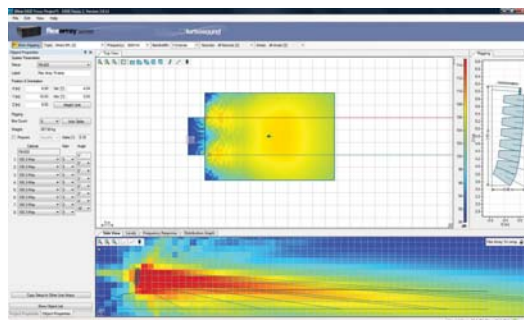
MILAN



Congratulations to Franc from 20SOUND who emailed his free subscription for Fusion LIVE and was the lucky winner of a pair of Turbosound Milan self-powered speakers.

20SOUND are based in Adelaide and provide audio, lighting and video projection services for corporate functions, school concerts, community events, weddings and religious festivals. The Turbosound Milan's are a welcome addition to 20SOUND's hire stock.

To receive future issues of Fusion LIVE direct to your post box, please email your details to marketing@hillssvl.com.au with "Fusion LIVE Subscription" as the subject line. Congratulations to Franc and his team.



flexarray

EASERA, and SysTune – **EASE Focus v2** takes a large step towards more realistic modeling of complex sound systems by including a number of major new features.

While efforts have been made to keep EASE Focus intuitive and easy to use for both sound engineers setting up a live sound system, and also for R&D engineers more interested in the acoustic qualities of array design, it now supports for the first time three-dimensional SPL mapping, multiple systems, and time and frequency response plots.

Among the new features are full support for the new EASE GLL loudspeaker data format; the capability to use multiple line array systems in a single project; a virtual equaliser for tuning a line array in the simulation; full 20Hz to 20kHz frequency range; and high accuracy due to advances in internal data resolution.

Turbosound's sales director Dominic Harter commented: "The release of Focus 2 marks a leap forward in this free-to-end-user modeling software. We have been using it on beta with FlexArray since last year and our clients are extremely happy. Turbosound has long believed that the skill base and experience of the team at AFMG is second to none in our industry. We are speaker designers, and that is where we focus all our energy. For acoustic predictions we go to the experts - AFMG are the experts."

Lake Controller on the iPad

Since the launch of Apple's category-defining iPad, many audio professionals have been looking for a way to run Lake's ubiquitous Lake Controller software on this small, cost-effective, and remarkably ingenious hardware platform.



Unfortunately, the full Lake Controller software application is designed to run only on a Windows OS and so this looked like an unlikely vision.

The engineers at Lake in Sweden conceived a work-around and set about testing various Virtual Network Computing (VNC) remote desktop solutions. Lake are delighted to present a solution allowing remote access of Lake Controller using iPad, retaining full functionality of all touchscreen controllable features – via the wireless tablet screen.

Setting up the system only requires a couple of software components – one for the Windows machine running Lake Controller, the other for the iPad (downloaded from the app store) – and then it takes less than 5 minutes to configure.

It's really quite straight-forward and a step by step guide is available from the Hills SVL Tech Support department. Please email audio_support@hillssvl.com.au to receive a copy.

Lake Controller software is already a proven performer, but the ability to control it remotely via iPad now takes it to a new level of convenience and user-experience.

New From Turbosound

Turbosound announced a host of new products at the recent Pro Light and Sound show in Frankfurt, including a new large format line array called FlashLine. Full details on this remarkable (and game changing) system will be available shortly.



Two other new products recently announced include the TMW-115 stage monitor and the M18 self-powered subwoofer.

The **TMW-115** is a low profile 15"/1" coaxial stage monitor. It can be run in either passive or biamp modes and features all neo components for improved efficiency and less weight. Please call to organise a demo.

The **Milan M18** sub is a self-powered single 18" bandpass subwoofer which can be used both with the Milan M15 full range enclosure and with other systems.

The internal 1000w amplifier features two input channels with both link and high-passed outputs. The two inputs allow a stereo feed (when only

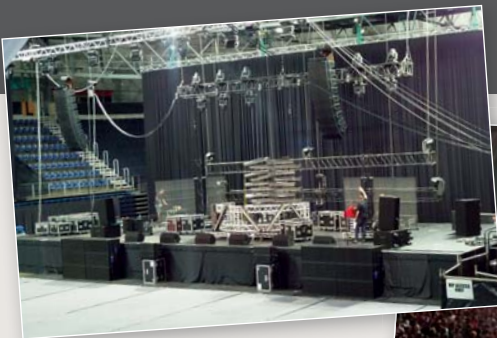


one sub is used) to be connected directly to the sub, high-passed and fed through to the stereo mid-high cabinets. The left and right signals are summed within the subwoofer through a low-pass filter to the 18" driver.

The M18 and M15 combination will keep even the most bass-hungry DJ's happy. Of course the applications are endless with installations, driveway hire and live bands being other key markets.



User Gallery



Elite Sound and Lighting

Warehouse Festival in Canberra
Turbosound FlexArray, Lab.gruppen PLM Power Amps



Pro Light and Sound

Good Life Festival in Melbourne
Turbosound Aspect, Lab.gruppen FP Power Amps



Turbosound FlexArray – Welcome New Owners!

FlexArray has become one of Turbosound's most successful products with the system in hot demand right around the world. Locally, we're pleased to announce three new Flex owners.



Photo: Kevin Farrant (ACC), J.Paul Bagley (Australian Audio), Peter Morris (Adelaide Sound Hire)

The **Adelaide Convention Centre (ACC)** is one of the busiest in the country, with a range of events from trade shows, to corporate dinners to product launches. The ACC recently increased its audio inventory with the addition of 18 x Turbosound FlexArray TFA600HDP self-powered elements.

The system is rigged as two hangs of nine elements for large events but can be easily split into smaller systems as required. Eight Turbosound NuQ8DP (8"/1") self powered cabinets were also purchased as front fill and general purpose speakers. Both the Flex and NuQ self-powered speakers are networked allowing the team full laptop control (gain, delay, EQ and monitoring) of every cabinet in the system, both individually and as user created groups. Kevin Farrant is the Production Supervisor at the ACC and finds the system a pleasure to work with.

From the prediction software, to the rigging, to the control software, Kevin and the team are delighted with the purchase and hope to acquire more Flex in the near future. The system was supplied by AJ Sound.

Australian Audio in Brisbane is run by J.Paul Bagley and covers a wide range of events from pub shows to dance parties and community functions. Paul has recently acquired 12 x FlexArray elements along with 6 x TFA600L (FlexArray single 18" flyable subwoofers).

Adelaide Sound Hire has taken delivery of 14 x TFA600H FlexArray elements. Peter Morris runs the company and has used the system on a wide range of shows from the Soundwave festival to numerous orchestral and choral events. Peter has been a long term user of Lake processing and knew that Lake processing could bring some additional performance advantages

to the system. Hand in hand with Turbo's engineers, Peter co-developed the new FIR filters - what was a great system is now simply mind-blowing.

Peter sums it up nicely: "Flex has always impressed me but with the new FIR's, it excels at everything we throw at it. From outdoor metal festivals to theatre and orchestral shows, it's the best sounding, and most versatile system I've heard."

FlexArray consists of a mid-size line array, along with single and dual 18" subwoofers. The Flex TFA600H element includes dual horn-loaded 10" drivers, a 6.5" Polyhorn loaded mid, and a Dendritic loaded 1". The sound, performance and output defy its size.

Please contact your local Hills SVL office for more information.

Conference Technologies and Assistive Listening Devices for AV Companies

The call comes in - the Event Co-ordinator wants to host a roundtable conference where each of the 40 delegates needs a microphone and needs to be able to hear everyone else. One option is lots of gooseneck mics, desk stands, cables, a digital mixer, distributed PA system and an operator with a keen eye to see who wants to talk next.



The smarter option is a dedicated conference system like the **Beyerdynamic MCS20**.

For about the price of a quality gooseneck mic, you get a high end Beyerdynamic gooseneck mic with integrated amplifier and speaker – and it simply daisy-chains from one unit to the next.

A chairman's version provides override functionality when required. The first link in the chain is the MCS20 power supply controller. The single rack space MCS20 will power up to 60 desk units and also provides an interface to feed auxiliary inputs into the system (such as a wireless mic for question time). An audio output is also provided for recording or to feed a gallery PA system or assistive listening system.

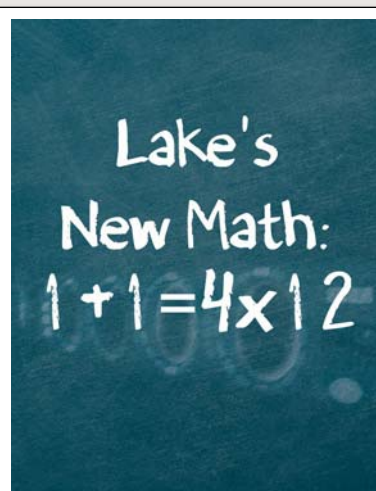
The system can be setup in minutes and a full range of accessories (including roadcases) is available. Beyerdynamic also have a range of wireless conference systems.



US based Williams Sound have a range of **infra-red transmission systems** which are perfect for portable hearing assistance or multi-language applications. One or more emitters (depending on room size or required number of audio channels) can be mounted on stands or truss and transmit to either headphones or belt packs. The range includes a neckloop so that users with hearing aids can switch to "T" mode and have their own individual hearing loop. Williams Sound also offer a full range of desktop chargers and accessories.

If you already have an IR system, but need additional receivers, call us as Williams Sound receivers are compatible with some other brands of IR systems - and feedback from the field tells us that our receivers are more sensitive which means better reception.

Please call for a demo.



Stack and link two LM 26 frames for a fully integrated 4x12 loudspeaker processor.

The world's most powerful loudspeaker processor just became even more so. New software and firmware upgrades let you integrate two LM 26 frames into one 4x12 virtual frame. The hardware link is via dedicated AES3 digital connections, so there's zero added latency. Once linked, you can quickly set up your integrated 4x12 processor within the familiar Lake Controller software interface. Configure modules and tweak parameters – mixing, EQ, crossover, delay and routing – exactly as with a single 4x12 unit. In fact, if you've used our renowned predecessor, you'll instantly feel right at home.



Intuitive Integrated Solutions

NSW

1 Clyde Street
Silverwater NSW 2128
Private Bag 149
Silverwater NSW 1811
P: (02) 9647 1411
F: (02) 9648 3698
nsw@hillssvl.com.au

ACT

1st floor, 4 Campion Street
Deakin ACT 2600
PO Box 109,
Deakin West ACT 2600
P: (02) 6260 4544
F: (02) 6260 4744
act@hillssvl.com.au

VIC

22/277 Middleborough Road
Box Hill VIC 3128
PO Box 151
Blackburn South VIC 3130
P: (03) 9890 7477
F: (03) 9890 7977
vic@hillssvl.com.au

QLD

42 Commercial Road
Fortitude Valley QLD 4006
PO Box 2578
Fortitude Valley BC QLD 4006
P: (07) 3852 1312
F: (07) 3252 1237
qld@hillssvl.com.au

SA

31 Walsh Street
Thebarton SA 5031
PO Box 157
Hindmarsh SA 5007
P: (08) 8408 8300
F: (08) 8408 8333
sa@hillssvl.com.au

WA

3/11 Howe Street
Osborne Park WA 6017
PO Box 1281
Osborne Park BC WA 6916
P: (08) 9204 0200
F: (08) 9244 3783
wa@hillssvl.com.au

NZ

9C Piermark Drive
Albany NZ 0752
PO Box 300-512
Albany NZ 0752
P: (09) 415 9426
F: (09) 415 9864
nz@hillssvl.co.nz

www.hillssvl.com.au

For more information, please contact your local Hills SVL office or one of our National Brand Managers:

PRO AUDIO Don McConnell don.mcconnell@hillssvl.com.au **LIGHTING** Paul Owen paul.owen@hillssvl.com.au **AV & PROJECTION** Dan Fletcher dan.fletcher@hillssvl.com.au