

FUSION

Your Hills SVL Monthly Update



Technology of the Future Helps Science Innovators Reach Out to the World

In the beginning, there was a simple lighting desk, three speakers, a pair of radio microphones, and a PC and projection screen for Powerpoint presentations. There were no sound effects, no moving lights, not a whiff of a special effect. But that was before an audiovisual "revolution" swept through **Questacon - The National Science and Technology Centre**.

HILLS SVL - Helping students reach their "Everest" with OOMO HITEVISION

VIVITEK D525ST Projector

AMPETRONIC'S DESIGN SOFTWARE gives everyone peace of mind

BEYERDYNAMIC CONFERENCE SYSTEMS now offer camera control

DTS Delta 10 DESIGNED LED Driver control unit and RGB LED Wash IP65

Sydney-based company, Auditoria Pty Ltd did the audio design work used for tender, with Construction Control winning the tender to overhaul the Japan Theatre and sub-contracting the audio-visual component to Canberra's own Sound Advice.

The result: a venue where the celebrated science theatre troupe known as the 'Questacon Excited Particles' can do just about anything they need to in terms of the audiovisual elements of their performances - and can now link their exhilarating hands-on shows with scientists and students across the world.

"Thanks to the integration provided by our new control system, Questacon is now realising its goal to reach into the lives of both the Australian and international scientific community," said Questacon's Excited Particles Coordinator, Patrick Helean.

"Since the completion of our Theatre upgrade, we've been able to extend our science education beyond the walls of Questacon, and 'bring-in' guests from overseas for interactive discussions with groups of Australian students."

When the then Prime Minister, the Hon Kevin Rudd MP, visited Questacon in February 2010 with Nobel Laureate Professor Elizabeth Blackburn AC, the pair discussed Professor Blackburn's pioneering DNA research with eight regional schools - via the Crestron's Pro2 control system.

The 150-seat Theatre is renowned as Australia's leading science education venue, with 13 performers providing a rich variety of themed shows, seven days a week, 364 days a year, for groups of visiting children and families.

Crestron in Control



As well as enhancing the Theatre's sensory experience, the Questacon brief called for a simple intuitive interface that would enable the Excited Particles, most of them solo performers, to control every element of their shows, from the sound and lighting to videos, live cameras, curtains, music and, of course, explosions.

Overarching control went to a Sound Advice and SVL favorite: the multi-award-winning Crestron Pro2 dual-bus system, offering state-of-the-art IP control through its dual Ethernet card, and multiple COM, IR and Serial ports providing ultra-fast interfacing between all modern AV media - plus scalability for a few yet to be invented!

For the all-important user interface, the designers chose two Crestron TPS15G-QM Touchpanels, offering dual-window video and HDTV displays alongside stunning crystal-clear graphics. Again, scalability was a key factor, with Crestron's e-Control2 software enabling users to turn an ordinary PC into a third touchpanel with identical looks and functions.

With a special program designed by Sound Advice, the Excited Particles can now control the different elements of the shows, either from their central control room or in the case of solo shows-from a touchpanel on the stage.

"The beauty of the whole thing is that, instead of having to go to the sound desk or the lighting desk or the curtains, you go to one central desk where there are 'pages' of clearly defined show formats that can be activated-or adapted-on a simple touchscreen," says Sound Advice's Managing Director, Norman Korte.

Hills SVL - Helping students reach their "Everest" with Qomo HiteVision



Hills SVL are very pleased to announce a partnership to distribute interactive classroom products from USA based Qomo HiteVision. The name Qomo (pronounced as "komo") is derived from the Tibetan word "Qomolangma" meaning Mt. Everest. Qomo not only desire to be at the top of their chosen field, they also wish to meet the desire of every student in reaching the pinnacle of their chosen field. Hills SVL are pleased to provide these same quality products and attributes to classroom, education and training facilities right across Australia and New Zealand.

Qomo deliver their solutions through 4 distinct product groups in the hope of achieving the following mantra: "Present - Interact - Write - Respond." They do this with these products.

Present: Document Cameras
Interact: Interactive Whiteboards (IWB)
Write: Touch screen interactive LCD Displays
Respond: Audience Response Systems

Qomo document cameras are used extensively across many major Universities in America. Their flexibility and features at a very attractive price need to be seen to be believed.

The Qomo HiteVision Interactive Whiteboards have a 60% market share in schools throughout China. With almost 360,000 schools in China this has become a great testing ground for Qomo.

The range of touch screen annotation devices can either be a great substitute for an IWB or alternatively complement your document camera by being able to interact more freely with your presentation.

Surveys suggest that the modern day student can significantly increase their grades when exposed to technology.

The Qomo 'Audience Response Systems' allow for students to answer test questions collectively and allow teachers to compile results and determine student progress instantaneously!

Hills SVL will be distributing a comprehensive product line up from Qomo and back this up with a level of service and support you, our valued customers, have come to expect.

With these products coming into the Hills SVL stable, we are now in a unique position of being able to offer a very high class total solution to the education sector. Combining the talents of well known and recognised brands of Australian Monitor and Crestron with new products like Vivitek projectors and Qomo, Hills SVL can provide a package that can be tailored to meet a budget or alternatively, meet a desired solution that would be the envy of any education institution in the world.

For more information regarding Qomo please visit the Hills SVL website www.hillssvl.com.au or alternatively arrange a demonstration with your Hills account manager via your local SVL branch. (details on the rear of this edition of fusion)



Vivitek D525ST Projector

Having trouble with your current short throw projector installations? Need some flexibility? Then read on.

The Vivitek D525ST short throw projector maybe your answer to those tricky installations where your installation needs to be spot on. Most short throw projectors only come with a fixed lens. The D525ST has a zoom lens, thus allowing a little more flexibility on site. A crucial time saver in certain circumstances.

The D525ST packs plenty of punch for the classroom with 2600 Lumens and HDMI connectivity in a 1.9kg box and with a 0.9-0.99:1 zoom lens your interactive classroom installations have never been simpler.

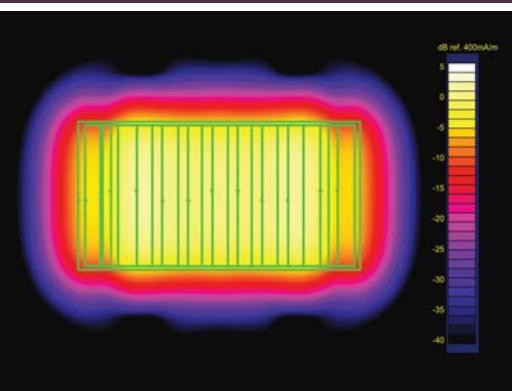
For more information visit www.hillssvl.com.au or contact your Hills SVL account Manager.

D525ST Quick Specs

- Native XGA (1024x768) 4:3 Aspect ratio
- Short Throw - Manual Zoom and Focus
- Fantastic portable projector with outstanding light output.
- Small form factor - only 1.9kg
- 3D Ready for gaming, movies or digital cameras
- DLP, Brilliant colour technology from Texas Instruments with 5 segment colour wheel
- HDMI 1.3, VGA, Component via VGA and RS232
- Instant shut down and rapid start up
- Auto Power Off
- Keypad Lock
- Credit card style remote control
- Carry Bag
- Kensington(tm) lock compatible for security
- Filter free design = low total cost of ownership
- 3 Year warranty



Ampetronic's design software gives everyone peace of mind



BCA calls up increased hearing loop coverage (80%) from May 2011



Recently announced changes to the Building Code of Australia (BCA) call for significantly increased areas of coverage from hearing induction loop systems installed within public spaces. These spaces include Class 9b assembly buildings, judicatory venues and ticket booths or counters where the public are shielded from the service provider. This new legislation comes into effect as of May 1, 2011.

Under current BCA requirements, a loop is to cover a minimum of 15% of the floor area (equitably distributed). Under the new rules, this coverage is raised to a minimum of 80% (of the floor area served by an inbuilt amplification system).

Coverage requirements for other forms of hearing augmentation, such as those using Infra-Red receivers, are also laid out in the new document, with a minimum coverage of 95% required. The number of receivers required is also specified, based on various bracketed audience sizes.

Hearing augmentation in transport venues has also become part of the BCA, with coverage in various areas called for: eg. Airport check-in, gate lounge and baggage reclaim areas.

Hearing induction loop systems for large floor areas need to be carefully designed. Simple 'perimeter loop' layouts

which work well for small rooms with timber floors, are often not suitable for larger rooms. For example, loops installed in large rooms built upon concrete slabs can suffer field strength and frequency response losses due to the presence of structural steel reinforcement (or 'reo') laid within the slab. In order to provide an installed system which meets the applicable Australian Standards (AS1428 and AS60118.4-2007) greater attention needs to be given to the site data, loop design and implementation.

As exclusive AU/NZ distributors of Ampetronic hearing induction loop systems and Williams Sound Infra-Red assistive listening systems, Hills SVL are specialists in the design and specification of hearing augmentation systems.

If you have any questions, or need a hand with a design, please feel free to contact one of our Business Development Managers:

Jeff Shoesmith
Email: jeff.shoesmith@hillssvl.com.au
Phone: 02 9647 1411

Jason Caldwell (Vic)
Email: jason.caldwell@hillssvl.com.au
Phone: 03 9890 7477



Beyerdynamic Conference Systems now offer camera control

It is now possible to control a camera (or cameras) with a Beyerdynamic D200 series Conference System, be it wired or wireless.



When a delegate pushes the "Speak" button, the camera swing's around, zooms in on the delegate and displays his or her image on a screen. When nobody is talking, the camera zooms out and shows the Conference Table in wide angle.

This fulfils a number of conference requirements:

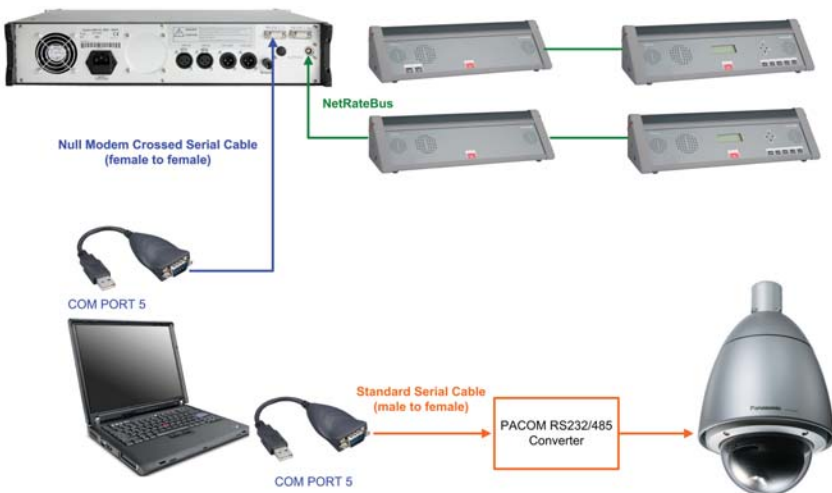
1. All delegates can see who is talking at the time;
2. A video recording can be made where a delegate is clearly identified;
3. In a typical City Council where Councillors are normally seated at a U-shape table, they would have their backs to the Public Gallery. This facility will enable the public to see the Councillor as he/she responds to questions;
4. This facilitates Video Conferencing where participants from remote areas can join in at a conference.

All it takes is addition of the software package iCNSvote, and the appropriate camera.

The recommended camera is Panasonic WV-CS954 Color Dome Camera distributed by PACOM, a Hills Company.

For more information, please contact Brand Manager :

Michael Pun
Email: michael.pun@hillssvl.com.au
Phone: 0457 532 319





DTS Delta 10

DTS have unveiled their new DELTA 10 F RGBW. Its compact, it delivers superb colour and it's really bright.



DELTA 10 F RGBW is the brightest LED colour changer in its category: 7.000 Lux at 5 m. With a high protection rating (IP55), its ideal for both indoor and outdoor use.

The light source is composed of 240 LEDs (60 Red, 60 Green, 60 Blue, 60 White) with 19.500 total lumens. There are five interchangeable lens sets available: spot (12°), medium flood (25°), wide flood (45°), elliptical (15° x 45°) and asymmetrical, which offer different light beam projection angles.

The LEDs distribution pattern guarantees a smooth colour mixing quality for RGBW colours and a uniform projection on surfaces, no matter what colour is used. DELTA 10 F RGBW can generate 16 million colours; colour temperature can be varied over a linear range from 2800°K to 6500°K.

As in the original version of the Delta, the new DELTA 10 F RGBW offers a range of exclusive functions, including:
*Twilight sensor for switching the unit on and off automatically, according to external light intensity, making it ideal for maximising energy savings in today's energy conscious environments.

With DMX as standard, there is also a complete on board menu that allows the fixture to be programmed and memorised in a sequence of events for stand alone use. It even includes a built in scheduler.

The DELTA 10 F is also available in RGBA or in a White+Amber version (180 white LEDs + 60 amber LEDs).

For further information, complete technical specifications and pricing, contact your local SVL office.

LED Driver control unit



RGB LED Wash IP65



- This 3 channel LED Driver with 12 bit PWM control for smooth fades and colour transitions is ideal for control on LED flexible strip and rigid strip lighting.
- A Fixed Colour mode allows output levels for each channel to be set using the front panel DIP switches - very handy for set and forget jobs.
- RS232 / 485 mode allows control for simple serial control from 1 way serial ports on devices like Crestron.
- A simple text based 9600 baud also allows PC control. Built in fading allows simpler controllers to send a value and fade time.
- Stand Alone mode allows the unit to be used without an external controller. Built in effects include colour chases and ramps, and fades of up to 4 hours. These are set using the DIP switches on the front of the unit.
- A test mode allows wiring to be tested and loads to be shown working. It allows commissioning of the system without an external controller present.
- Output 3 Ch at 5amp each (9-36v DC)

A compact and high powered LED wash light.

It consists of 36 x 1W LEDs which allow for full RGB colour mixing. Smooth colour mixing via DMX control or stand alone modes. Ideal for schools, churches and is rated for outdoor use (IP65)

- Built in effects include colour mixing, strobing, Dim 0%-100%, speed adjustment etc.
- Address setup via 2 button LED display Construction:
- Body Colour: Silver (Black optional) Protection Rating: IP65
- Low Power Consumption: 65W
- Compact Size 342 x 152 x 214mm (with bracket) Weight: 4kg



SIGN UP FOR ENEWS

Hills SVL releases an online eNews every fortnight. To keep up to date with the latest news and product information from the group, Subscribe by emailing your details to marketing@hillssvl.com.au



Intuitive Integrated Solutions

NSW 1 Clyde Street Silverwater NSW 2128 Private Bag 149 Silverwater NSW 1811 Phone: (02) 9647 1411 Fax: (02) 9648 3698 nsw@hillssvl.com.au	ACT 1st floor, 4 Campion Street Deakin ACT 2600 PO Box 109 Deakin West ACT 2600 Phone: (02) 6260 4544 Fax: (02) 6260 4744 act@hillssvl.com.au	VIC 22/277 Middleborough Road Box Hill VIC 3128 PO Box 151 Blackburn South VIC 3130 Phone: (03) 9890 7477 Fax: (03) 9890 7977 vic@hillssvl.com.au	QLD 42 Commercial Road Fortitude Valley QLD 4006 PO Box 2578 Fortitude Valley BC QLD 4006 Phone: (07) 3852 1312 Fax: (07) 3252 1237 qld@hillssvl.com.au	SA 31 Walsh Street Thebarton SA 5031 PO Box 157 Hindmarsh SA 5007 Phone: (08) 8408 8300 Fax: (08) 8408 8333 sa@hillssvl.com.au	WA 3/11 Howe Street Osborne Park WA 6017 PO Box 1281 Osborne Park BC WA 6916 Phone: (08) 9204 0200 Fax: (08) 9244 3783 wa@hillssvl.com.au	NZ 9C Piermark Drive Albany NZ 0752 PO Box 300-512 Albany NZ 0752 Phone: (09) 415 9426 Fax: (09) 415 9864 nz@hillssvl.com.nz
---	--	--	--	--	---	--

www.hillssvl.com.au – Check out our new site