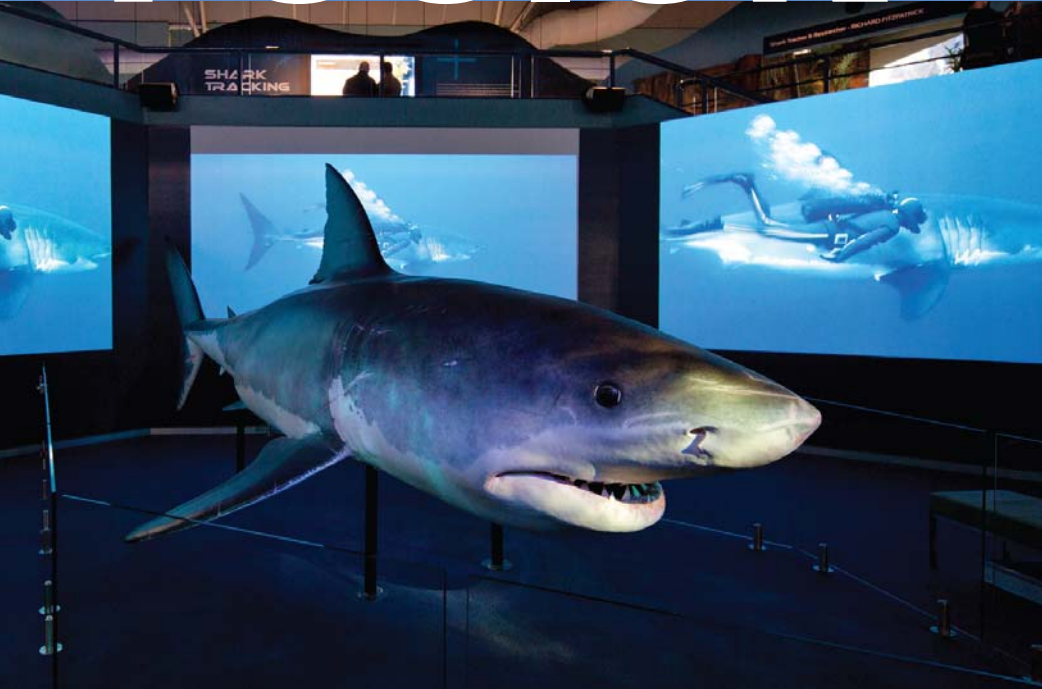


# FUSION



## What Lies Beneath? Vivitek lights up a whole new world

Ever wondered what it would be like to swim up beside a Great White Shark in the ocean without the fear of being eaten... or even getting wet? This is now possible after the recent refurbishment of the Sydney Aquarium Darling Harbour. As part of this impressive renovation, five Vivitek full installation projectors have been chosen to run video content up to 18 hours a day 7 days a week through the aquarium.

### LAB.GRUPPEN

PLM20000Q - 4 x 5000w with Lake Processing in 2RU

**TURBOSOUND** Compact TCX Series

**ATEIS** Voice Alarm System Installed In Hong Kong Airport

**NEW TURBO TCSC35T** Ceiling Speaker

**AUSTRALIAN MONITOR** Zoner 16

**DIGITALMEDIA™** for the Digital Home

Working through not only tight timelines but also having to meet the budget, the Sydney based arm of B&H Australia Pty Ltd were tasked with finding a solution that not only satisfied this criteria but most importantly provide an image based upon the expectations of the general public and what they would expect to see inside an attraction with the reputation such as the Sydney Aquarium.

Utilising a combination of both the Vivitek D6010 (6000 lumens 1280 x 800 WXGA) and the D6510 (6500 lumens 1024 x 768 XGA), B&H were able to transform what were once blank walls into an experience designed to give visitors an insight into life below the surface.

Doug Kelly, B&H Project Account Manager, approached Hills SVL to assist with this solution after he had learnt about the Vivitek products and had become accustomed to the seamless solutions being provided by Hills SVL. His major concern was being able to complete the solution within the designated time frame.

Doug Kelly: "Many vendors do not truly understand the pressures us integrators can face on the job site. Working to tight time lines and working to budget can often prove to be the most difficult part of any job. We approached Hills SVL, not only because we knew they had the right solution for us, but also because we know that they understood the expectations and pressures we faced

to deliver the job in time. Hills SVL only committed to us once they were confident they could supply the right products in time. We knew from this time that we were going to be able to achieve the result within the time frame and budget designated by the client." The solution was commissioned in time for the July school holidays.

With the expected increase in patronage the Aquarium wanted to be able to capture the thoughts of the public. Mark Craig from Sydney Attractions who had consulted Sightline Pty Ltd to come up with the idea for the aquarium explained that the new displays had certainly achieved the result they were after. The large venue Vivitek projectors have produced the brightness and resolution they were looking for and the images have certainly captivated the audiences as they pass through the aquarium. With the projectors running up to 18 hours a day for 7 days a week, they also need to be reliable. The Vivitek projectors are ticking all the boxes.

To find out more about the Vivitek large venue projectors or the rest of the Vivitek range, head to our website [www.hillssvl.com.au](http://www.hillssvl.com.au) or contact your Hills account manager to arrange a consultation.

# Lab.gruppen PLM20000Q -- 4 x 5000w with Lake Processing in 2RU

LAB.GRUPPEN



The expanded PLM Series now affords users total flexibility in re-configuring racks for power-hungry subwoofers, line arrays, or stage monitors.

The PLM 20000Q Powered Loudspeaker Management system couples the world's most powerful four-channel amplifier platform to the industry-leading digital sound processing features of Lake Processing. The result is a seamlessly unified sound reinforcement core that offers unprecedented flexibility, pristine digital filtering and delay, plus effortless ability to drive difficult loads. When compared to conventional approaches using separate components, the PLM 20000Q affords significant advantages in sonic performance, user functionality, rental inventory utilization, and long-term cost savings.

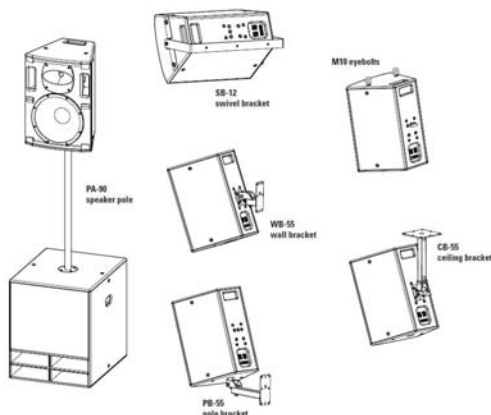
The PLM 20000Q provides four discrete output channels, each rated at greater than 5000 W into 2.2 – 3.3 ohms (4400 W into 4 ohms). To achieve this massive output power, Lab.gruppen engineers designed an all-new universal (100 to 265 V) Regulated Switch Mode Power Supply (R.SMPS) with power factor correction to reduce peak current draw.

New output devices in the refined Class TD output stage allow 194 V peak voltage to the load. And the Power Average Limiter works in tandem with a software-controlled Breaker Emulation Limiter (BEL<sup>®</sup>) to avoid tripping of mains breakers, even with prolonged peak demands.

The new PLM 20000Q complements two other systems – the four-channel PLM 10000Q and the two-channel PLM 14000 – in the expanded PLM Series. All three integrate Dante™ networked audio distribution, renowned Lake<sup>®</sup> drive processing, and load verification with real-time performance monitoring. Each is housed in a 2U hardware frame and is supplied with a special version of the familiar Lake Controller software application for remote monitoring and control of all functions. The same Lake Controller-equipped computer can control any combination of PLM Series units, new stand-alone LM 26 Lake Processors, Dolby<sup>®</sup> Lake Processors, and legacy Lake units.

## Turbosound Compact TCX Series

For Both Portable and Installed  
Applications



The popular Turbosound TCS Compact (install) and TXD (portable) ranges have been replaced with an all new range called Compact TCX.

The new Compact series offers four high performance passive two-way loudspeakers, and a choice of two bandpass subwoofers. Designed to be discrete in permanent installs, the Compact series cabinets also feature concealed pole mount sockets and rear handles for an unobtrusive appearance, but making them equally suited to portable use.

The Compact series comprises the 8" two-way TCX-8, 10" two-way TCX-10, 12" two-way TCX-12, and 15" two-way TCX-15 passive loudspeakers, plus TCX-15B and TCX-18B subwoofers, all with Speakon NL4 and barrier strip connectors. Internal M10 rigging points are provided for use with Turbosound wall and ceiling brackets, and also for OmniMount™ loudspeaker mounting hardware.

The Compact series is supported by the latest GLL data file format for use with the EASE acoustic simulation program. The well-proven rotatable Converging Elliptical Waveguide also features in the range, with the smooth and even dispersion characteristics that are ideal for smaller clubs, cafés and restaurants. Each of the four full-range models has a rotatable waveguide and can be mounted vertically or horizontally.

Irrespective of whether you need a rugged driveway hire system, or discrete speakers to be installed in a bar or club, the Compact TCX Series has you covered.

Black versions are available now. Optional white, custom colour and IP rated models will be available in the coming months.

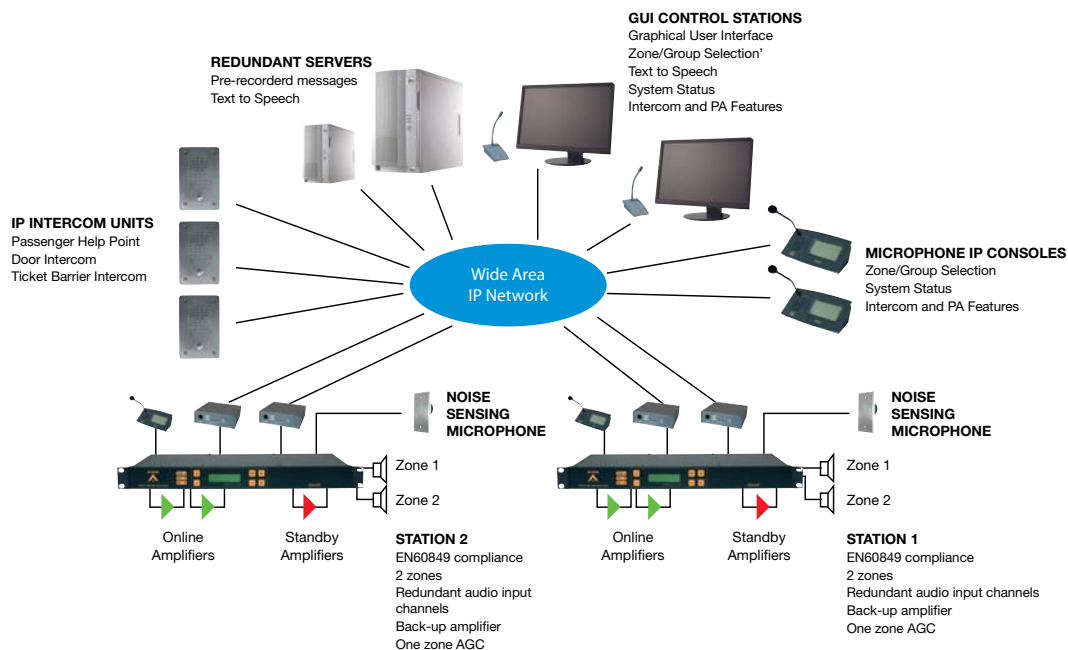
Please contact your local Hills SVL office for information.

Turbosound



# Ateis Voice Alarm System Installed In Hong Kong Airport

One of the busiest airports in Asia – Hong Kong International Airport – has installed an Ateis Voice Alarm System to manage its Emergency Paging and Evacuation operations.



One of the busiest airports in Asia – Hong Kong International Airport – has installed an Ateis Voice Alarm System to manage its Emergency Paging and Evacuation operations.

The system was chosen for its:

- Compliance with the International Standards EN60849
- Integration capabilities with Fire Panels and other building services
- Failsafe reliability with built-in redundancy
- Flexibility in configurations and future upgrades
- User friendliness

For a high pressure environment in airport operations where rapid movements of passengers in total safety is a prime consideration, nothing can be left to chance.

Ateis fulfils all the requirements.

The diagram above shows how it is done.

Hills SVL is the exclusive distributor of ATEIS in Australia and New Zealand.



# New Turbo TCSC35T Ceiling Speaker

Perfect for Shallow Ceiling Spaces.

Turbosound have added a second ceiling speaker to the range with the introduction of the TCSC35T. Using the same components and voicing as the Impact 35T wall mount speaker, the new ceiling model offers full range performance but with a low 100mm mounting depth – making it suitable for shallow ceiling spaces.

The TCSC35T consists of a front loaded 3.5" bass/mid driver and a 1" ferrofluid-cooled neodymium soft dome tweeter. The rear metal housing is an integral part of the sealed enclosure, giving controlled low frequency performance, while the high frequency waveguide is designed to increase output and ensure even dispersion.

A multi-tap transformer is integral to the unit with tappings of 30w, 15w and 7.5w at 70 and 100v line. A 16 ohm transformer bypass is also available for low impedance applications. Adjustments can be made via a rotary switch behind the grill.

The TCSC35T ships with tile rails and a C-plate to fit all types of ceiling grids. The unit comes in white with the front baffle and grill being paintable for custom installations.

Like its big brother (the TCSC50T), the TCSC35T is a wide dispersion design (150x150 degrees in this case) and therefore fewer speakers are typically needed for many installations - which means less hardware, cabling and labour.

The TCSC35T is suitable for bars, pubs and restaurants as well as for speech applications in foyers, meeting rooms and boardrooms. It also blends perfectly with the TCSC50T and the entire Impact series and TSB subwoofers for larger applications requiring a mix of products.

Please contact your local Hills SVL office for more information.

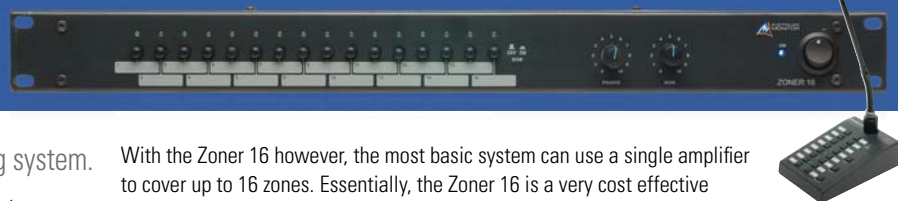


# Australian Monitor Zoner 16

The Australian Monitor Zoner 16 is a low cost 16 zone paging system.

It differs from the rest of the Australian Monitor zone products as it is an output switching system rather than a matrix switcher like the Digipage, ZRM4 and ZoneMix3 products. The main difference is that with conventional matrix switchers like our Digipage, an amplifier is required per zone.

With the Zoner 16 however, the most basic system can use a single amplifier to cover up to 16 zones. Essentially, the Zoner 16 is a very cost effective 100v line speaker switcher with a zone paging microphone and the capability to support a background music source.





# DigitalMedia™ for the Digital Home

With the promise of a high speed fibre network rollout in Australia, and the increase of online audio and video content, Sydney integrator Len Wallis Audio delivered a truly digital home using Crestron DigitalMedia™ (DM) fibre optic distribution.

“Future proof was the main focus of the infrastructure and equipment configuration” says Peter Greentree, Len Wallis Audio custom system sales and design. “The client requested that where possible equipment remain in a single location and be distributed. After the Crestron fibre optic backbone was in place, we consulted with the client to work out the sources to be distributed. We came to a conclusion that a Crestron 8x8 Digital media system would do the job (but) it was at this point that a decision was made to proceed with a 16x16 DM for future expansion.”

This project uses the Crestron DM fibre network to distribute video, control and ethernet around the house, providing distribution of HDMI signals from a variety of sources to multiple displays. Most importantly, DM allows multiple users to view and control sources at the same time with no dropouts or HDCP issues. The system is based around a Crestron DM-MD16X16 matrix which delivers full high definition content to each room through Crestron multi-mode fibre cable where a Crestron Room Controller (up to 300 mtrs cable length) mounted behind the display on the wall decodes the signal to provide HDMI, ethernet and control signals. The twelve zones of stereo audio are done using two Crestron CNX-BIPAD-8 audio processors and a Creston CNAMPXI-12X60

12-channel amplifier. Distributed audio sources include two Crestron CENI-iSERVER music servers, two Crestron CEN-IDOC-V iPod docks located in the rooms which all sync to iTunes on 8TB drives in the rack. Two Arcam DAB tuners provide digital radio.

All up there are 16 areas of entertainment made up of four 5.1 zones and twelve stereo zones all powered by Crestron amplifiers. One such location is the pool area which features an elaborate James Audio 8.1 speaker system and Crestron WPFR-48 waterproof remote control for the ultimate outdoor audio experience!

All display locations feature Crestron TPMCI-3X remote controls while a couple of Crestron TPS12LW 12" in-wall touchscreens provide whole-house control and view the security cameras. The integration is extensive controlling 8 zones of floor-heating and 65 motorised devices made up of blinds, curtains, awnings and motorised skylight windows.

Peter adds, “This was the first Crestron DigitalMedia™ fibre project in Australia. We anticipated a degree of learning and fault finding throughout the process and highlighted this to the client at the time. In fact it was completely the opposite. The installation, termination, commissioning and programming of the system was actually easier and less time consuming than a traditional copper project. (On

completion) all displays and projector were ISF calibrated... where the certified calibrator commented that the ‘picture quality from the distribution system was amazing’ ”.

“We often read the words ‘future-proof’ or ‘smart-home’. For the very first time we feel that this may actually be an appropriate description of this project... It doesn’t suffer from any annoying HDMI / HDCP issues we all experienced when the industry was coming to grips with protected content. It also has the bandwidth and hardware expansion to deal with whatever is on the horizon for many years to come”, Peter Greentree.

Since the local release in September 2009, there are now over 100 completed Crestron DigitalMedia™(DM) projects in universities, boardrooms, luxury homes and entertainment venues throughout Australia, and growing rapidly. DM is the only solution for the digital age, distributing all analogue and uncompressed HD digital signals, and managing embedded data such as HDCP, EDID and CEC.

Supplied by: Len Wallis Audio and CEDIA Asia Pacific.



## SIGN UP FOR ENEWS

Hills SVL releases an online eNews every fortnight. To keep up to date with the latest news and product information from the group, Subscribe by emailing your details to [marketing@hillssvl.com.au](mailto:marketing@hillssvl.com.au)



## Intuitive Integrated Solutions

**NSW**  
1 Clyde Street  
Silverwater NSW 2128  
Private Bag 149  
Silverwater NSW 1811  
Phone: (02) 9647 1411  
Fax: (02) 9648 3698  
[nsw@hillssvl.com.au](mailto:nsw@hillssvl.com.au)

**ACT**  
1st floor, 4 Campion Street  
Deakin ACT 2600  
PO Box 109  
Deakin West ACT 2600  
Phone: (02) 6260 4544  
Fax: (02) 6260 4744  
[act@hillssvl.com.au](mailto:act@hillssvl.com.au)

**VIC**  
22/277 Middleborough Road  
Box Hill VIC 3128  
PO Box 151  
Blackburn South VIC 3130  
Phone: (03) 9890 7477  
Fax: (03) 9890 7977  
[vic@hillssvl.com.au](mailto:vic@hillssvl.com.au)

**QLD**  
42 Commercial Road  
Fortitude Valley QLD 4006  
PO Box 2578  
Fortitude Valley BC QLD 4006  
Phone: (07) 3852 1312  
Fax: (07) 3252 1237  
[qld@hillssvl.com.au](mailto:qld@hillssvl.com.au)

**SA**  
31 Walsh Street  
Thebarton SA 5031  
PO Box 157  
Hindmarsh SA 5007  
Phone: (08) 8408 8300  
Fax: (08) 8408 8333  
[sa@hillssvl.com.au](mailto:sa@hillssvl.com.au)

**WA**  
3/11 Howe Street  
Osborne Park WA 6017  
PO Box 1281  
Osborne Park BC WA 6916  
Phone: (08) 9204 0200  
Fax: (08) 9244 3783  
[wa@hillssvl.com.au](mailto:wa@hillssvl.com.au)

**NZ**  
9C Piermark Drive  
Albany NZ 0752  
PO Box 300-512  
Albany NZ 0752  
Phone: (09) 415 9426  
Fax: (09) 415 9864  
[nz@hillssvl.com.co.nz](mailto:nz@hillssvl.com.co.nz)

[www.hillssvl.com.au](http://www.hillssvl.com.au) – Check out our new site